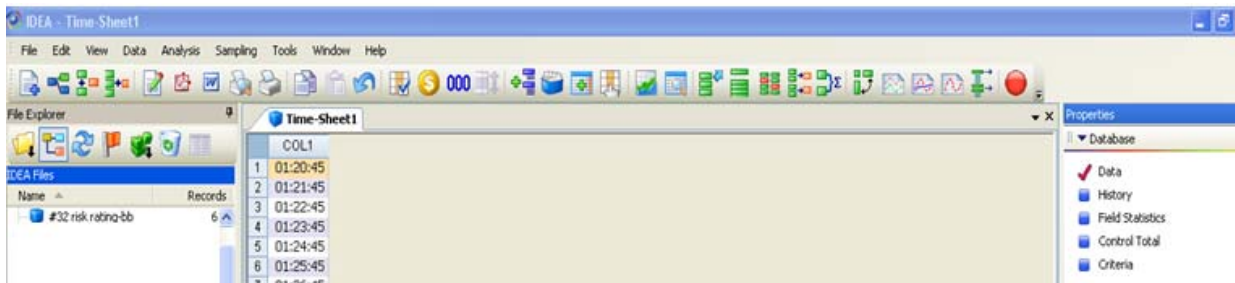


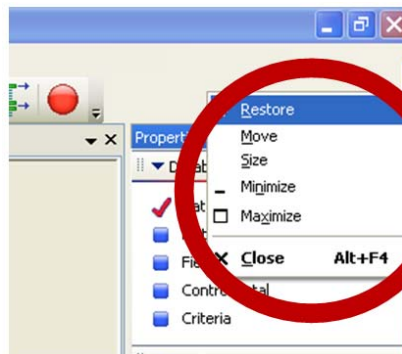
IDEA Freezes When You Open the Equation Editor

1. Your IDEA will become the inactive window making the name on the toolbar grey out. Below is an example of what it would look like:

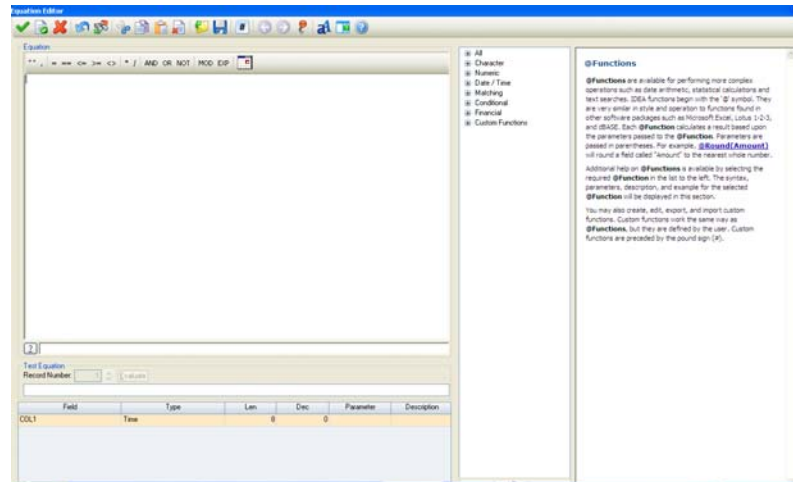


If you try doing any operation, it should not allow you to. This could be because you were using Dual Monitors and then you changed the settings back to one monitor without dragging the Equation Editor back to your main monitor. What happens is that the **Equation Editor** is open, although it is not on your screen.

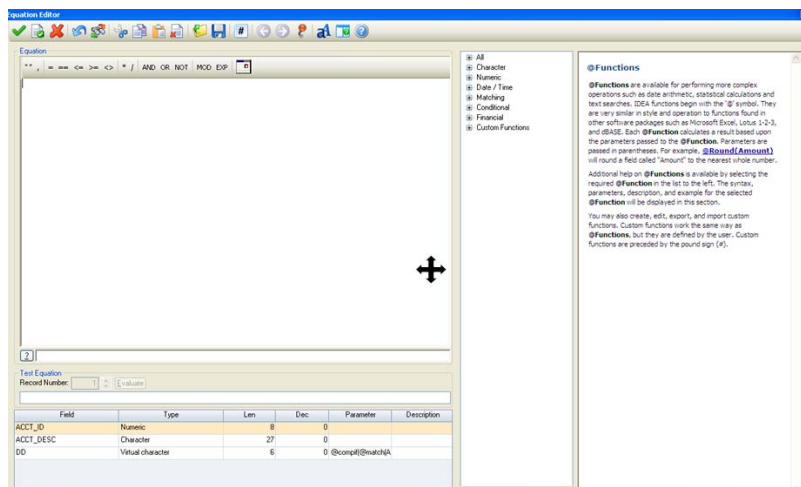
2. To make it reappear, press the **Alt + Space Bar** at the same time. You should get a menu like the one shown below. Note: This can appear anywhere on your screen.



3. Select the **Maximize** option from the menu. This will cause the Equation Editor to fill your whole screen.



4. To resize the Equation Editor, press the **Alt + Space Bar** and then the menu option will appear again. Select the **Size** option on your menu. Once you have done this, your screen should look something like the image below with a cross arrow in the center of your screen:



5. This will allow you to resize your **Equation Editor**. What you will do is press the down arrow key on your keyboard once, and then move your mouse, towards the top of your screen, to resize it; once completed, left click your mouse to stop the resizing. You can then use your mouse to finish your resizing, by dragging the corners of the **Equation Editor**.

6. This should unfreeze your IDEA and allow your Equation Editor to become functional and your active window again.